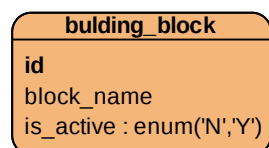
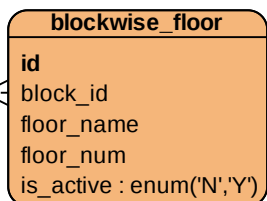


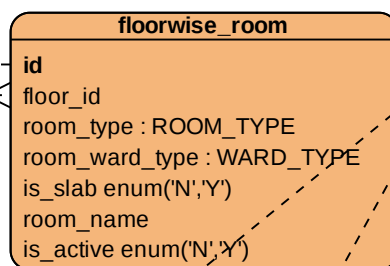
list of bulding and block for that hospital Primacies



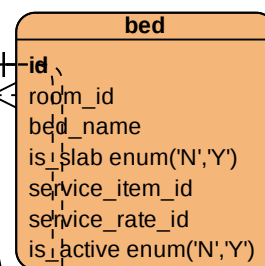
list of floor for each block



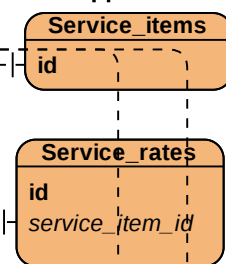
list of rooms for each floor and block, type - Emergency Room,OPD Room,IPD Room,ICU



list of bed for each room, floor and block



Service charge and rate related master table, mapped in bed



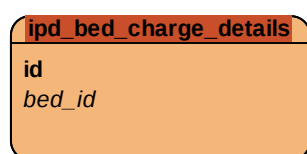
Few table display partially

(ipd_bed_charge_details, ipd_bed_details, ot_bookings, task_staff_assignments

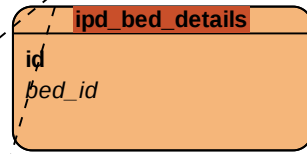
taskwise_assignment_tracker, visit_details, doctor_clinic_schedule, opd_doctor_appointments)

to show relation between room and bed with other opd, ipd and shift module in Primary Key and Foreign Key

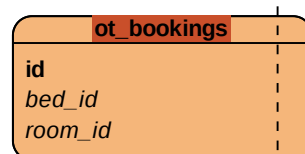
Capture Bed charge details in respect of Bed ID



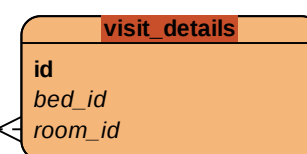
Track IPD bed related transaction detail - admit, transfer



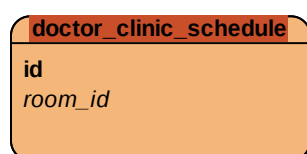
Capture OT room and Bed details for IPD patients



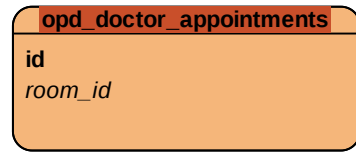
Capture room detail for OPD & OT and Bed details for IPD



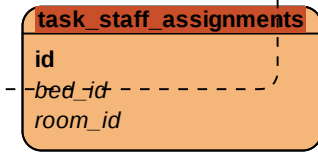
Capture room detail for doctors appointment schedule



Capture room detail for OPD doctors appointment



capture staff assignment details for rooms and beds



tracker for staff assignment details against rooms and beds

